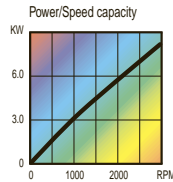
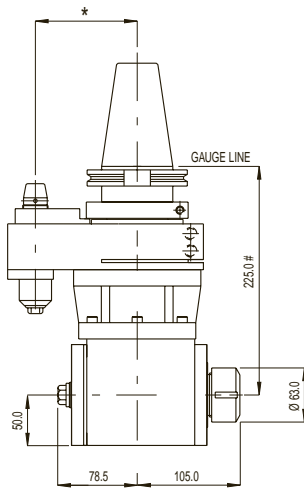
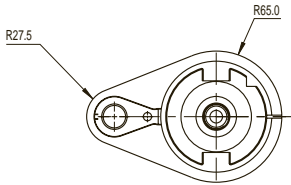


RAD 225

RIGHT ANGLE MILL/DRILL/TAP



The RAD-225 is able to accommodate end mills, drills and tension tap collets.

- Auto tool change capability
- Alternative drive tapers available
- Maintenance free sealed unit

228 mm with BT

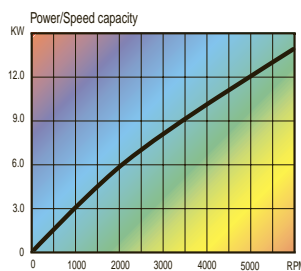
* Pin centre distance to suit application



Max. speed	3,000 rpm
Max. tool shank dia.	30 mm / 1.3/16"
Max. tapping size	M22 / 7/8"
Ratio	1:1
Rotation	Opposite
Drive taper	50 BT-CT-DIN-HSK
Tool holding	Collet chuck ER40
Max. weight without tooling	15.5 kg / 35 lbs

RAD 225 HS

HIGH SPEED RIGHT ANGLE MILL/DRILL/TAP

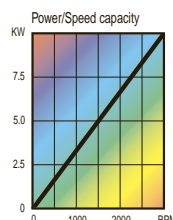


Max. speed	6,000 rpm
Max. tool shank dia.	30 mm / 1.3/16"
Max. tapping size	M22 / 7/8"
Ratio	1:1
Rotation	Opposite
Drive taper	50 BT-CT-DIN-HSK
Tool holding	Collet chuck ER40
Max. weight without tooling	15.5 kg / 35 lbs

RAD 225 HD

HEAVY DUTY RIGHT ANGLE MILL/DRILL/TAP

The Heavy Duty RAD-225 has a heavy milling capacity. It is fitted with front angular contact bearings supported by heavy duty roller bearings at the tail for increased rigidity.



Max. speed	3,000 rpm
Max. tool shank dia.	30 mm / 1.3/16"
Max. tapping size	M22 / 7/8"
Ratio	1:1
Rotation	Opposite
Drive taper	50 BT-CT-DIN-HSK
Tool holding	Collet chuck ER40
Max. weight without tooling	16.0 kg / 36 lbs